

Premium Outrigger Pad R36-2

Model Specifications

PATENT PENDING

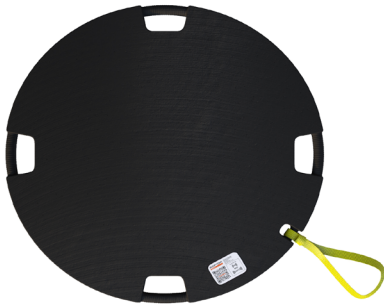
RAPTOR

TECH

630-725-9373 | info@raptortechinc.com

5411 Walnut Avenue, Downers Grove, IL 60515

Technical Specifications



Model	R36-2-UHMW
Dimensions	36 x 2 inches
Approx. Area	6.7 sq. ft.
Weight	66.8 lbs.
Crush Rating	500 PSI
Working Load Limit	100,000 lbs.

Features

- *100% full product transparency
- Embedded RFID and NFC technology
- Engineering data and material certifications
- All pad data accessible via smartphone
- Automatically update and track inventory
- Reduces employee NIOSH lifting index
- Avoids on site injury and employee fatigue
- Removeable lifting lanyard with capacity rating
- Non-breakable ergonomic through hole handles
- Resistant to water and chemicals
- Portable, easy, and fast setup
- Hook, roll, tip or drag!
- Provides a stable base for your load
- Limited lifetime warranty
- Compatible with The Outrigger Pad Rack

*Raptor Tech's Outrigger Pads provide full product transparency. Embedded NFC technology allows for easy inventory tracking, while the embedded RFID technology provides instant access to important outrigger pad data. This data includes date of production, serial number, material certifications showing proof of origin and quality, company data, & other essential data.

